

# Schwenkbares Drosselrückschlagventil

## Valvola di ritegno a farfalla orientabile

### Swivelling throttle non-return valve

**FP 37650**  
**FP 37750**

#### Technische Daten / Dati tecnici / Technical notes

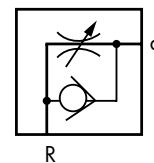
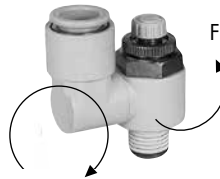
Medium / Fluido / Fluid	Druckluft gefiltert 10 µm, geölt oder ungeölt Aria compressa filtrata µm con o senza olio Compressed air filtered 10 µm oiled or not
Anschluss / Manicotto / Stud	PTFE beschichtet / -rivestito in PTFE / PTFE coated
Aussengewinde / Filettatura / Thread	1/8, 1/4, 3/8, 1/2 konisch / conico / taper
Einstellbereich / Numero di giri / Number of needle rotation	10 Umdrehungen / giri / turns
Prüfdruck / Pressione di prova / Proof pressure	15 bar
Betriebsdruckbereich / Pressione di esercizio / Working pressure	1 - 10 bar
Betriebstemperaturbereich / Temperatura ambiente e mezzo / Ambient and fluid temperature	+5°C - +60°C
Einbaulage / Posizione di montaggio / Built-in position	beliebig / qualsiasi / any

- Kostengünstige Montage
- Hoher Durchfluss
- Präzise Regulierbarkeit auch bei kleinem Durchfluss
- 360° schwenkbar
- Für Nylon- und Polyurethanschläuche geeignet
- Riduzione del tempo di installazione
- Passaggio del flusso elevato
- Il flusso può essere controllata in modo preciso anche a valori bassi
- Orientabile a 360°
- Possibilità di utilizzo di tubi in nylon e poliuretano
- Minimises installation time
- Constant speed easily set
- Speed may be accurately controlled even at low speed
- Body swivels 360°
- Accepts nylon and polyurethane tubing

FP 37650



FP 37750



#### Durchfluss

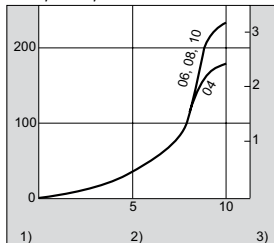
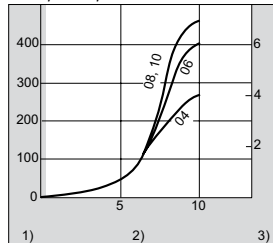
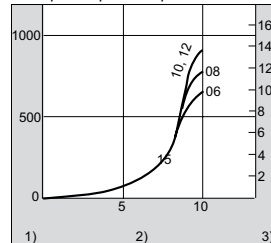
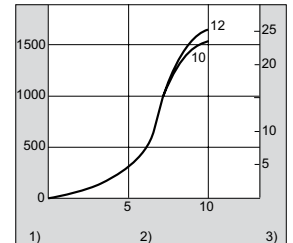
Eingangsdruck 5 bar

#### Flusso aria

Pressione di alimentazione 5 bar

#### Air flow

Supply pressure 5 bar

 Grösse/Dimensione/Size  
4-1/8, 6-1/8, 8-1/8

 Grösse/Dimensione/Size  
6-1/4, 8-1/4, 10-1/4

 Grösse/Dimensione/Size  
6-3/8, 8-3/8, 10-3/8, 12-3/8

 Grösse/Dimensione/Size  
12-1/2


1) Volumenstrom / flusso aria / Air flow [l/min]

2) Anzahl Nadelumdrehungen / Numero di giri spillo / Number of needle rotation

 3) Aequ. Querschnitt / sezione equivalente / Effective orifice [mm<sup>2</sup>]